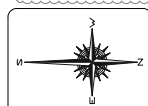
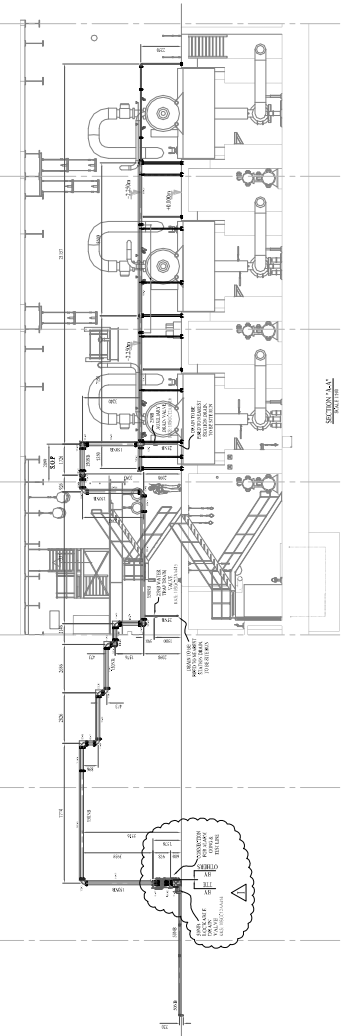
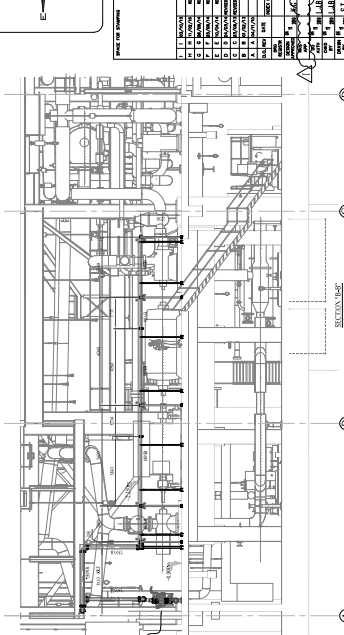


DEFECTOR NUMBER	MS TAG	SHOW/DESCRIPTION
0.00	10000000000000000000	FIVE POUNDS OF DRY PENK
0.01	10000000000000000000	FIVE POUNDS OF DRY PENK
0.02	10000000000000000000	FIVE POUNDS OF DRY PENK
0.03	10000000000000000000	FIVE POUNDS OF DRY PENK
0.04	10000000000000000000	FIVE POUNDS OF DRY PENK
0.05	10000000000000000000	FIVE POUNDS OF DRY PENK
0.06	10000000000000000000	FIVE POUNDS OF DRY PENK
0.07	10000000000000000000	FIVE POUNDS OF DRY PENK
0.08	10000000000000000000	FIVE POUNDS OF DRY PENK
0.09	10000000000000000000	FIVE POUNDS OF DRY PENK
0.10	10000000000000000000	FIVE POUNDS OF DRY PENK
0.11	10000000000000000000	FIVE POUNDS OF DRY PENK
0.12	10000000000000000000	FIVE POUNDS OF DRY PENK
0.13	10000000000000000000	FIVE POUNDS OF DRY PENK
0.14	10000000000000000000	FIVE POUNDS OF DRY PENK
0.15	10000000000000000000	FIVE POUNDS OF DRY PENK
0.16	10000000000000000000	FIVE POUNDS OF DRY PENK
0.17	10000000000000000000	FIVE POUNDS OF DRY PENK
0.18	10000000000000000000	FIVE POUNDS OF DRY PENK
0.19	10000000000000000000	FIVE POUNDS OF DRY PENK
0.20	10000000000000000000	FIVE POUNDS OF DRY PENK
0.21	10000000000000000000	FIVE POUNDS OF DRY PENK
0.22	10000000000000000000	FIVE POUNDS OF DRY PENK
0.23	10000000000000000000	FIVE POUNDS OF DRY PENK
0.24	10000000000000000000	FIVE POUNDS OF DRY PENK
0.25	10000000000000000000	FIVE POUNDS OF DRY PENK
0.26	10000000000000000000	FIVE POUNDS OF DRY PENK
0.27	10000000000000000000	FIVE POUNDS OF DRY PENK
0.28	10000000000000000000	FIVE POUNDS OF DRY PENK
0.29	10000000000000000000	FIVE POUNDS OF DRY PENK
0.30	10000000000000000000	FIVE POUNDS OF DRY PENK

NOTE:
TO BE READ IN CONJUNCTION WITH
KKS EQUIPMENT LIST: KUS/16/M---E30/LE/00
ALL DIMENSIONS PROVIDED ARE IN mm
UNLESS OTHERWISE STATED.

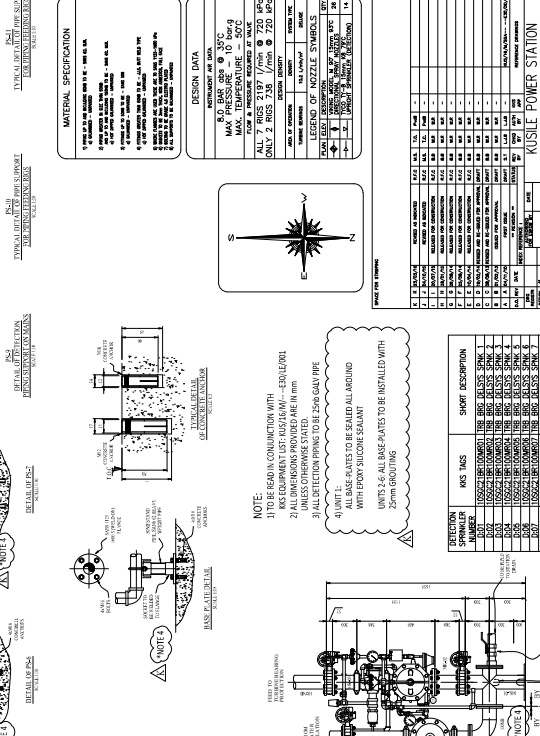
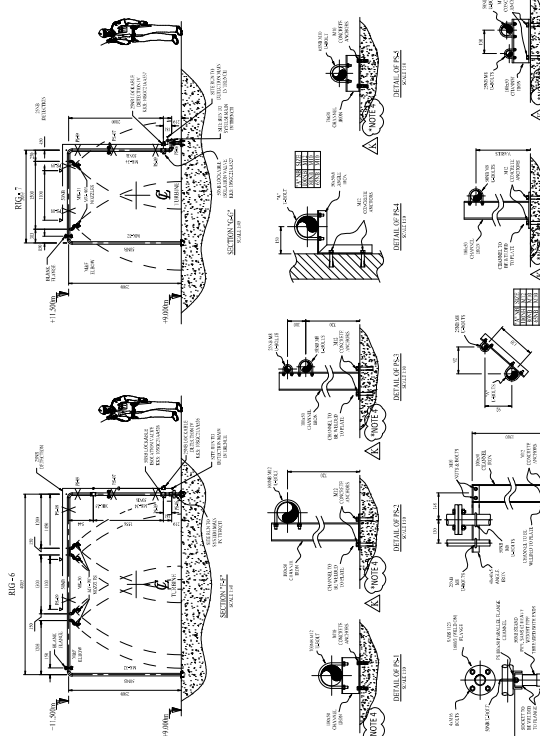
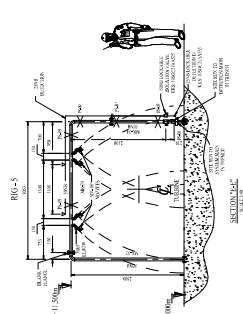


DESIGN DATA	
FLOW & PRESSURE REQUIRED AT VALVE	
3651.76 l/min @ 500 kPa	
DESIGN DENSITY	
AREA OF ORIFICE	DESIGN DENSITY
mm ²	132 kg/m ³
LEGEND OF NOZZLE SYMBOLS	
PLANT KEY	DESCRIPTION
①	200 MM x 25 MM 14.53 OPEN
②	100 MM x 25 MM 14.53 OPEN
③	50 MM x 25 MM 14.53 OPEN
④	100 MM x 25 MM 14.53 OPEN
⑤	100 MM x 25 MM 14.53 OPEN
⑥	100 MM x 25 MM 14.53 OPEN
⑦	100 MM x 25 MM 14.53 OPEN
⑧	100 MM x 25 MM 14.53 OPEN
⑨	100 MM x 25 MM 14.53 OPEN
⑩	100 MM x 25 MM 14.53 OPEN
⑪	100 MM x 25 MM 14.53 OPEN
⑫	100 MM x 25 MM 14.53 OPEN
⑬	100 MM x 25 MM 14.53 OPEN
⑭	100 MM x 25 MM 14.53 OPEN
⑮	100 MM x 25 MM 14.53 OPEN
⑯	100 MM x 25 MM 14.53 OPEN
⑰	100 MM x 25 MM 14.53 OPEN
⑱	100 MM x 25 MM 14.53 OPEN
⑲	100 MM x 25 MM 14.53 OPEN
⑳	100 MM x 25 MM 14.53 OPEN
㉑	100 MM x 25 MM 14.53 OPEN
㉒	100 MM x 25 MM 14.53 OPEN
㉓	100 MM x 25 MM 14.53 OPEN
㉔	100 MM x 25 MM 14.53 OPEN
㉕	100 MM x 25 MM 14.53 OPEN
㉖	100 MM x 25 MM 14.53 OPEN
㉗	100 MM x 25 MM 14.53 OPEN
㉘	100 MM x 25 MM 14.53 OPEN
㉙	100 MM x 25 MM 14.53 OPEN
㉚	100 MM x 25 MM 14.53 OPEN
㉛	100 MM x 25 MM 14.53 OPEN
㉜	100 MM x 25 MM 14.53 OPEN
㉝	100 MM x 25 MM 14.53 OPEN
㉞	100 MM x 25 MM 14.53 OPEN
㉟	100 MM x 25 MM 14.53 OPEN
㊱	100 MM x 25 MM 14.53 OPEN
㊲	100 MM x 25 MM 14.53 OPEN
㊳	100 MM x 25 MM 14.53 OPEN
㊴	100 MM x 25 MM 14.53 OPEN
㊵	100 MM x 25 MM 14.53 OPEN
㊶	100 MM x 25 MM 14.53 OPEN
㊷	100 MM x 25 MM 14.53 OPEN
㊸	100 MM x 25 MM 14.53 OPEN
㊹	100 MM x 25 MM 14.53 OPEN
㊺	100 MM x 25 MM 14.53 OPEN
㊻	100 MM x 25 MM 14.53 OPEN
㊼	100 MM x 25 MM 14.53 OPEN
㊽	100 MM x 25 MM 14.53 OPEN
㊾	100 MM x 25 MM 14.53 OPEN
㊿	100 MM x 25 MM 14.53 OPEN



KUSLE POWER STATION GENERAL INFORMATION FIRE PROTECTION FEED WATER PUMPS (UNIT 1-6)		KUSLE POWER STATION GENERAL INFORMATION FIRE PROTECTION FEED WATER PUMPS (UNIT 1-6)	
UNIT NO.	1	UNIT NO.	2
FEED WATER PUMP NO.	1	FEED WATER PUMP NO.	2
FEED WATER PUMP NO.	3	FEED WATER PUMP NO.	4
FEED WATER PUMP NO.	5	FEED WATER PUMP NO.	6
FEED WATER PUMP NO.	7	FEED WATER PUMP NO.	8
FEED WATER PUMP NO.	9	FEED WATER PUMP NO.	10
FEED WATER PUMP NO.	11	FEED WATER PUMP NO.	12
FEED WATER PUMP NO.	13	FEED WATER PUMP NO.	14
FEED WATER PUMP NO.	15	FEED WATER PUMP NO.	16
FEED WATER PUMP NO.	17	FEED WATER PUMP NO.	18
FEED WATER PUMP NO.	19	FEED WATER PUMP NO.	20
FEED WATER PUMP NO.	21	FEED WATER PUMP NO.	22
FEED WATER PUMP NO.	23	FEED WATER PUMP NO.	24
FEED WATER PUMP NO.	25	FEED WATER PUMP NO.	26
FEED WATER PUMP NO.	27	FEED WATER PUMP NO.	28
FEED WATER PUMP NO.	29	FEED WATER PUMP NO.	30
FEED WATER PUMP NO.	31	FEED WATER PUMP NO.	32
FEED WATER PUMP NO.	33	FEED WATER PUMP NO.	34
FEED WATER PUMP NO.	35	FEED WATER PUMP NO.	36
FEED WATER PUMP NO.	37	FEED WATER PUMP NO.	38
FEED WATER PUMP NO.	39	FEED WATER PUMP NO.	40
FEED WATER PUMP NO.	41	FEED WATER PUMP NO.	42
FEED WATER PUMP NO.	43	FEED WATER PUMP NO.	44
FEED WATER PUMP NO.	45	FEED WATER PUMP NO.	46
FEED WATER PUMP NO.	47	FEED WATER PUMP NO.	48
FEED WATER PUMP NO.	49	FEED WATER PUMP NO.	50
FEED WATER PUMP NO.	51	FEED WATER PUMP NO.	52
FEED WATER PUMP NO.	53	FEED WATER PUMP NO.	54
FEED WATER PUMP NO.	55	FEED WATER PUMP NO.	56
FEED WATER PUMP NO.	57	FEED WATER PUMP NO.	58
FEED WATER PUMP NO.	59	FEED WATER PUMP NO.	60
FEED WATER PUMP NO.	61	FEED WATER PUMP NO.	62
FEED WATER PUMP NO.	63	FEED WATER PUMP NO.	64
FEED WATER PUMP NO.	65	FEED WATER PUMP NO.	66
FEED WATER PUMP NO.	67	FEED WATER PUMP NO.	68
FEED WATER PUMP NO.	69	FEED WATER PUMP NO.	70
FEED WATER PUMP NO.	71	FEED WATER PUMP NO.	72
FEED WATER PUMP NO.	73	FEED WATER PUMP NO.	74
FEED WATER PUMP NO.	75	FEED WATER PUMP NO.	76
FEED WATER PUMP NO.	77	FEED WATER PUMP NO.	78
FEED WATER PUMP NO.	79	FEED WATER PUMP NO.	80
FEED WATER PUMP NO.	81	FEED WATER PUMP NO.	82
FEED WATER PUMP NO.	83	FEED WATER PUMP NO.	84
FEED WATER PUMP NO.	85	FEED WATER PUMP NO.	86
FEED WATER PUMP NO.	87	FEED WATER PUMP NO.	88
FEED WATER PUMP NO.	89	FEED WATER PUMP NO.	90
FEED WATER PUMP NO.	91	FEED WATER PUMP NO.	92
FEED WATER PUMP NO.	93	FEED WATER PUMP NO.	94
FEED WATER PUMP NO.	95	FEED WATER PUMP NO.	96
FEED WATER PUMP NO.	97	FEED WATER PUMP NO.	98
FEED WATER PUMP NO.	99	FEED WATER PUMP NO.	100

[illegible]



DETECTION NUMBER	KEY TAGS	SHORT DESCRIPTION
0.01	050222 16R 000011	18 4600 16 01 STS SPARK 1
0.02	050222 16R 000012	18 4600 16 01 STS SPARK 2
0.03	050222 16R 000013	18 4600 16 01 STS SPARK 3
0.04	050222 16R 000014	18 4600 16 01 STS SPARK 4
0.05	050222 16R 000015	18 4600 16 01 STS SPARK 5
0.06	050222 16R 000016	18 4600 16 01 STS SPARK 6
0.07	050222 16R 000017	18 4600 16 01 STS SPARK 7
0.08	050222 16R 000018	18 4600 16 01 STS SPARK 8
0.09	050222 16R 000019	18 4600 16 01 STS SPARK 9
0.10	050222 16R 000020	18 4600 16 01 STS SPARK 10
0.11	050222 16R 000021	18 4600 16 01 STS SPARK 11
0.12	050222 16R 000022	18 4600 16 01 STS SPARK 12
0.13	050222 16R 000023	18 4600 16 01 STS SPARK 13
0.14	050222 16R 000024	18 4600 16 01 STS SPARK 14

NOTE:

- 1) TO BE READ IN CONJUNCTION WITH K&S EQUIPMENT LIST: KUS/16/M4—E30/1E/001
- 2) ALL DIMENSIONS PROVIDED ARE IN mm UNLESS OTHERWISE STATED.
- 3) ALL DETECTION PIPING TO BE 25% GALV PIPE
- 4) UNIT 1:
 - ALL BASE-PLATES TO BE SEALED ALL AROUND WITH EPOXY SILICONE SEALANT
 - UNITS 2-6: ALL BASE-PLATES TO BE INSTALLED WITH 25% GROUTING

[illegible]

DESIGN DATA		
INSTRUMENT AIR DATA		
6.0 BAR abs @ 35°C		
MAX. PRESSURE - 10 bar/g		
MAX. TEMPERATURE - 50°C		
FLOW IN PRESSURE REQUIRED AT VALVE		
ALL 7 RIGS	2197 1/min @ 720 kPa	
VALVE 2 RIGS	738 1/min @ 720 kPa	
DESIGN DENSITY		
AREA OF DISCHARGE	DENSITY	
VALVE NUMBER	VAL. AREA/m ²	
DESIGN PRESS.		
LEGEND OF NOZZLE SYMBOLS		
PLAN	ELV.	DESCRIPTION
	0	WORKING MODEL IN 20" INCHES
	20	WORKING MODEL IN 20" INCHES
	14	WORKING MODEL IN 14" INCHES

[illegible][illegible]